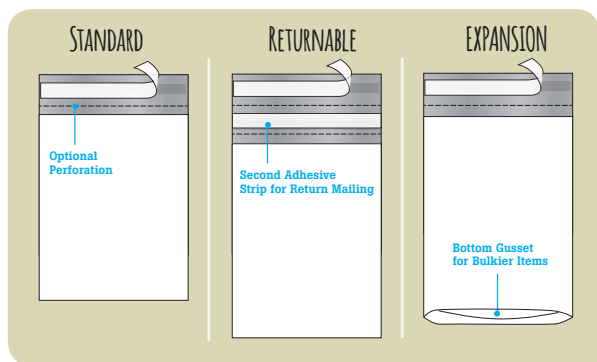




# POLY MAILERS



Designed to protect mailed items from damage and prying eyes, Our Poly Mailers are tear resistant and durable; built from co-extruded poly to withstand over-stuffing and the wear and tear of shipping. These opaque courier bags have a white outer surface and silver inner surface for added security.

## PRODUCT FEATURES

- ▶ Tear-resistant and durable
- ▶ Tamper-evident, with a permanent self-seal adhesive strip for easy closure
- ▶ Choice of Standard (non-perforated), Perforated, Returnable, and Expansion (bottom gusseted).
- ▶ Returnable Poly Mailers have a second adhesive strip to allow for easy merchandise returns or a second shipment.
- ▶ Expansion Poly Mailers have a bottom gusset to accommodate bulky items.

## POLY MAILERS

ITEM	W x L	LIP	CNT	WT
<b>NON-PERFORATED</b>				
5150	6 X 9	1.5"	1000	12
5155	7.5 X 10.5	1.5"	1000	17
5160	9 X 12	1.5"	1000	22
5165	10 X 13	1.5"	1000	26
5170	12 X 15.5	1.5"	500	19
5175	14 X 17	1.5"	500	23
5180	14.5 X 19	1.5"	500	27
5185	19 X 24	2"	200	18
5190	24 X 24	2"	200	22

ITEM	W x L	LIP	CNT	WT
<b>PERFORATED</b>				
5100	6 X 9	1.5"	1000	12
5102	7.5 X 10.5	1.5"	1000	17
5104	9 X 12	1.5"	1000	22
5107	10 X 13	1.5"	1000	26
5110	12 X 15.5	1.5"	500	19
5112	14 X 17	1.5"	500	23
5115	14.5 X 19	1.5"	500	27
5117	19 X 24	2"	200	18
5120	24 X 24	2"	200	22

## RETURNABLE POLY MAILERS

ITEM	W x L	LIP	CNT	WT
5200	12 X 15.5	3"	500	19
5205	14 X 17	3"	500	23
5210	19 X 24	3"	200	17

## EXPANSION POLY MAILERS

ITEM	W x L	LIP	CNT	WT
<b>NON-PERFORATED</b>				
5212	10 X 13 - 2" BG	1.5"	1000	22
5214	11 X 13 - 4" BG	1.5"	500	13
5216	13 X 16 - 4" BG	1.5"	500	19
5218	15 X 20 - 4" BG	1.5"	300	16
5220	20 X 24 - 4" BG	2"	200	17
5222	26 X 28 - 5" BG	2"	100	13